

The Drover's Lads

Scottish Jig

♩=120

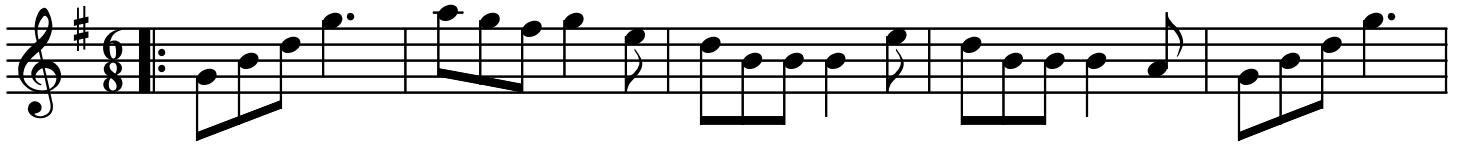
G

G

G

G

G



⑥

D

Em

G

D

G

D

G

C

G



⑪

G

G

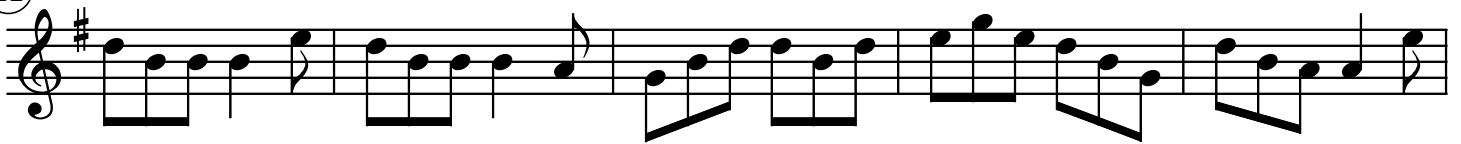
G

C

G

G

D



⑮

G

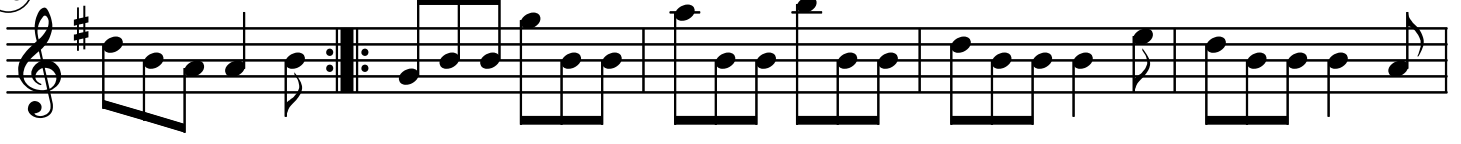
D

G

G

G

G



⑳

G

G

G

D

G

D

G



㉔

G

C

G

G

G

G

C



㉙

G

D

G

D

